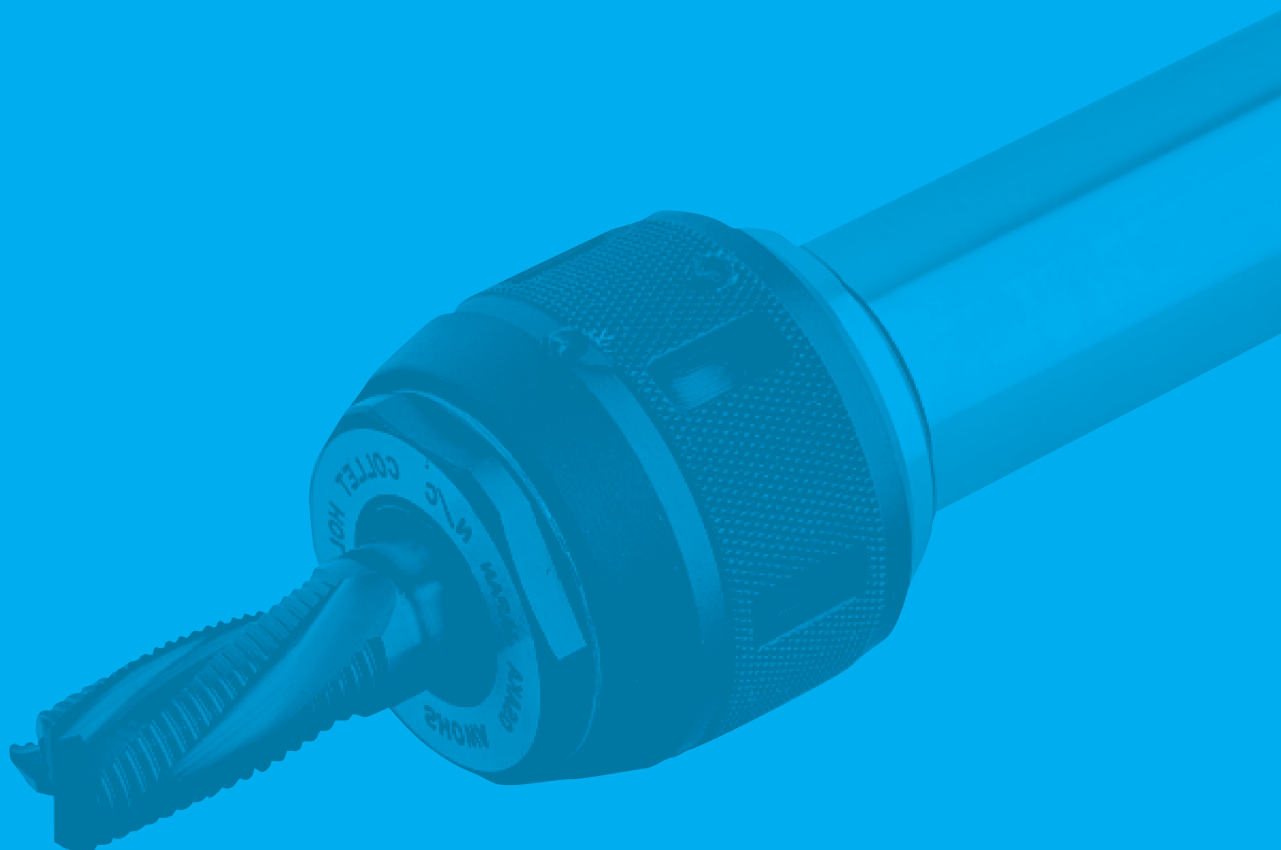
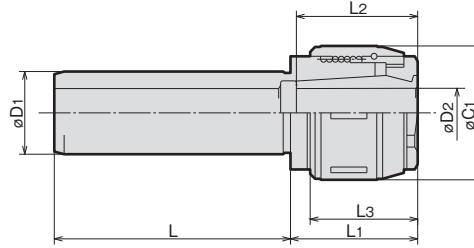


# ST series

147	HARD CHUCK
147	COLLET CHUCK
148	COLLET CHUCK (SLIM TYPE)
148	TAP HOLDER (Clockwise Rotation)
149	<BORING SYSTEM> TWINCUT
150	<BORING SYSTEM> FIRSTCUT
151	SLIM SIDE LOCK HOLDER
151	MORSE TAPER COLLET
152	FACE MILL ARBORS (Type A)
152	SIDE CUTTER ARBOR
153	ADJUSTABLE TAPPER (Key Drive)
153	SIDE LOCK TAPPER (Set Screw Drive)
154	DRIVER (Positive)
154	DRIVER (With Torque Clutch)
154	TAP COLLET



▶▶ Thru-the-tool Coolant Available



MODEL	CODE	øD1	L	L1	L2	L3	øD2	øC1	N/W (kg)	
ST32	-CTH16	30002	32	95	48	50	42	16	52	1.0
ST42	-CTH16	30004	42							1.5

**ORDERING EXAMPLE**

① **ST32** ② **CTH** - ③ **16**

① Shank Size  
② Holder's Name  
③ Cutter's Shank Dia.

ACCESSORIES  
▶ **P.47** SPRING COLLET

ACCESSORIES  
▶ **P.49** CHUCK WRENCH

ACCESSORIES  
▶ **P.48** STRAIGHT COLLETS, ADJUST SCREW

ST series

# COLLET CHUCK (PLATE COATING)

▶▶ Thru-the-tool Coolant Available

▶▶ Thru-the-groove Coolant Available

FIG.1

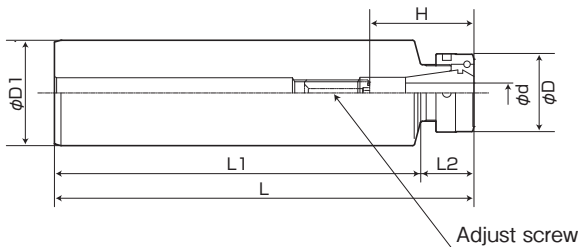
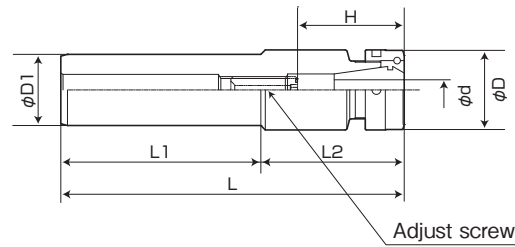


FIG.2



MODEL	CODE	FIG	ød (GRIPPING RANGE)	øD	øD1	L	L1	L2	H	COLLET	NUT	ADJUST SCREW
ST20	RSC07N-150	620260	1	0.5~7	24	150	133	17	25~40	CR07-(D)	RSN07NB	(M6×20L-CTW)
	RSC10N-150	620262	2	0.5~10	30		125	25	31~48	CR10-(D)	RSN10NB	RAS10-25-2.5
ST25	RSC10N-170	620264	1	0.5~10	30	170	147.5	22.5	31~48	CR10-(D)	RSN10NB	RAS10-25-2.5
	RSC13N-170	620266	2	0.5~13	36		125	45	35~52	CR13-(D)	RSN13NB	RAS13-25-2.5
ST32	RSC10N-170	620268	1	0.5~10	30	185	125	60	31~48	CR10-(D)	RSN10NB	RAS10-25-2.5
	RSC13N-185	620270		0.5~13	36				35~52	CR13-(D)	RSN13NB	RAS13-25-2.5
	RSC16N-185	620272	2	1~16	42				38~77	CR16-(D)	RSN16NB	RAS16-25-5
	RSC20N-185	620274		1.5~20	50				44~54	CR20-(D)	RSN20NB	

NOTE : 1. Collet and chuck wrench are sold separately.  
2. CROH collet is used for thru-the-tool coolant application.

**ORDERING EXAMPLE**

① **ST20** - ② **RSC** ③ **07** - ④ **120**

① Shank Size  
② Name  
③ Max. øD  
④ L1

ACCESSORIES  
▶ **P.53-56** COLLETS

ACCESSORIES  
▶ **P.57** NUT, ADJUST SCREW, CHUCK WRENCH

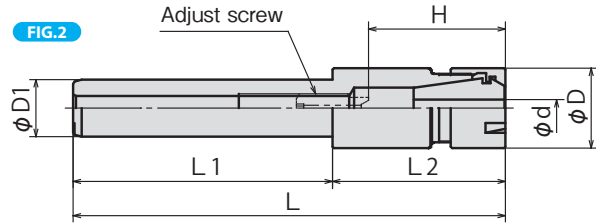
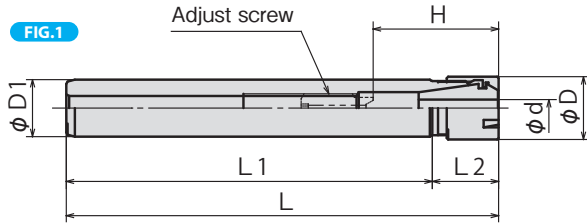
# COLLET CHUCK (SLIM TYPE)

FEATURES P.14

ST<sup>Ⓧ</sup>-SSC<sup>Ⓧ</sup>MAX-L

▶▶ Thru-the-tool Coolant Available

▶▶ Thru-the-groove Coolant Available



MODEL	CODE	FIG	øD	øD1	L	L1	L2	H	COLLET	NUT	ADJUST SCREW
ST16	SSC07-100	30377	16	16	100	83	17	25~40	CR07-d CROH07-d	ER11MN	M6×20L-CTW
	SSC07-150	30378			150	133					
	SSC07-200	30379			200	183					
ST20	SSC10-100	30831	22	20	100	77	23	31~48	CR10-d CROH10-d	ER16MN	RAS10-25-2.5
	SSC10-150	30832			150	127					
	SSC10-200	30833			200	177					
	SSC10-250	30834	250	227	60	35~52	CR13-d CROH13-d	ER20MN	RAS10-25-2.5		
	SSC13-150	30835	150	90							
	SSC13-200	30836	200	140							

NOTE: 1. Collet and chuck wrench are sold separately.  
2. CROH collet is used for thru-the-tool coolant application.

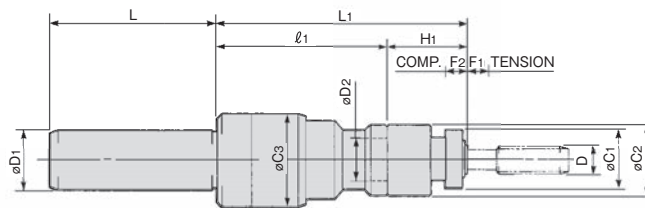
ACCESSORIES  
➔ P.122-125 COLLETS

ACCESSORIES  
➔ P.126 NUT, ADJUST SCREW, CHUCK WRENCH

ORDERING EXAMPLE			
①	②	③	④
ST20	- SSC	10	- 100
① Shank Size	② Holder's Name	③ Max. øD	④ G.L. Length

# TAP HOLDER (Clockwise Rotation)

ST<sup>Ⓧ</sup>-TPC<sup>Ⓧ</sup>(D<sub>1</sub>)-(L<sub>1</sub>)



MODEL	CODE	øD1	øD2	L	L1	l1	øC1	øC2	øC3	H1	F1	F2	D	TAP COLLET CODE	N/W (kg)
ST32	-TPC20-150	30026	20	112	150	105	32	40	47	45	15	15	M 4-M14	TCC20-Ⓧ	1.5
	-TPC29-175	30028	29		175	120	45	55	63	55			M12-M27	TCC29-Ⓧ	2.5
ST42	-TPC20-150	30030	20	117	150	105	32	40	47	45	15	15	M 4-M14	TCC20-Ⓧ	2.1
	-TPC29-175	30032	29		175	120	45	55	63	55			M12-M27	TCC29-Ⓧ	3.0

ACCESSORIES  
➔ P.66 TAP COLLETS

ORDERING EXAMPLE			
①	②	③	④
ST32	- TPC	20	- 150
① シャンクサイズ øD1	Shank Size øD1	② 呼称	Name
③ Max. øD2	Max. øD2	④ L1	L1

BT series

HSK series

ST series

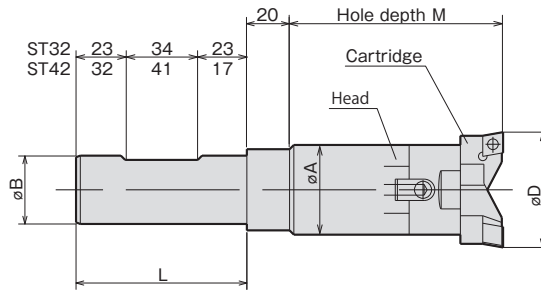
Versatile Tool

Cutting Tool

Accessories

## FEATURES

- Versatile modular type boring system.
- Rigidity is increased by the new coupling method and the serrated head.
- Twin blades allow heavy cutting.
- Extensions are used for deep holes.



ST series

RANGE	MODEL	CODE	SHANK	HEAD	CARTRIDGE	INSERT	M	L	øA	øB	N/W (kg)	
ø25~33	- TWC25 - 100 - S	32010	ST32	- SBS1 - 100	HE25	CT25	WT25-079	100	80	24	32	1.1
ø32~45	- TWC32 - 100 - S	32020		- SBS2 - 100	HE32	CT32	WT32-095	100		31		1.3
ø44~63	- TWC44 - 100 - S	32030		- SBS3 - 100	HE44	CT44	WT62-127	100		42		1.9
ø62~89	- TWC62 - 140 - S	32040		- SBS4 - 140	HE62	CT62		140		54		3.0
ø88~126	- TWC88 - 140 - S	32050		- SBS5 - 140	HE88	CT88		140		64		4.1
ø25~33	- TWC25 - 100 - S	32110	ST42	- SBS1 - 100	HE25	CT25	WT25-079	100	90	24	42	1.7
ø32~45	- TWC32 - 100 - S	32120		- SBS2 - 100	HE32	CT32	WT32-095	100		31		1.9
ø44~63	- TWC44 - 100 - S	32130		- SBS3 - 100	HE44	CT44	WT62-127	100		42		2.3
ø62~89	- TWC62 - 125 - S	32140		- SBS4 - 125	HE62	CT62		125		54		3.3
ø88~126	- TWC88 - 125 - S	32150		- SBS5 - 125	HE88	CT88		125		64		4.1

NOTE : 1. Inserts are sold separately. Please refer to P.62.  
2. Thru-the-tool coolant type is manufactured to orders.

### ORDERING EXAMPLE

①	②	③	④	⑤
ST32	- TWC	25	- 100	- S
① Shank Size øB	② Name	③ Min. øD	④ M	⑤ Set



ACCESSORIES

P.70 INSERTS

▶▶▶ Thru-the-tool Coolant Available

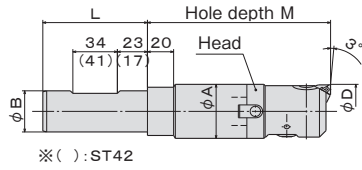


Fig. 1

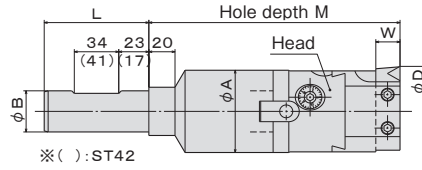


Fig. 2

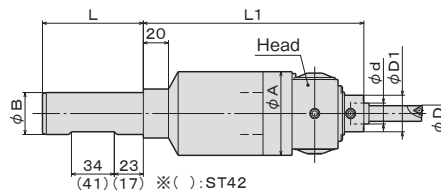
RANGE	MODEL	Fig	CODE	SHANK	HEAD	BORING TOOL	INSERT	L	M	φA	φB	W	N/W (kg)
φ25~32	-FIC25N-130-S	1	620450	-SBS1-100	FCH25N	-	TP□□0802□□	80	100	24	32	-	1.1
φ32~44 注4)	-FIC32N-140-S		620452	-SBS2-100	FCH32N				110	31			1.4
φ44~57	-FIC44N-140-S		620454	-SBS3-100	FCH44N				140	42			2.0
φ55~73	-FIC55N-175-S		620456	-SBS4-140	FCH55N				175	54			3.4
φ70~140	-FIC70N-195-S	2	620458	-SBS5-140	FCH70N	TBS119C12 SBS919 TBS919 TSBS919	CP□□1204□□ TP□□1603□□ CC□□1204□□ TC□□16T3□□	195	64	□19	5.2		
φ25~32	-FIC25N-130-S	1	620470	-SBS1-100	FCH25N	-	TP□□0802□□	90	100	24	42	-	1.7
φ32~44 注4)	-FIC32N-140-S		620472	-SBS2-100	FCH32N				110	31			2.0
φ44~57	-FIC44N-140-S		620474	-SBS3-100	FCH44N				140	42			2.6
φ55~73	-FIC55N-160-S		620476	-SBS4-125	FCH55N				160	54			3.8
φ70~140	-FIC70N-180-S	2	620478	-SBS5-125	FCH70N	TBS119C12 SBS919 TBS919 TSBS919	CP□□1204□□ TP□□1603□□ CC□□1204□□ TC□□16T3□□	180	64	□19	5.4		

- NOTE :1. Adjustable in φ0.01mm per scale.  
 2. Insert on FIC70N is square shank tool.  
 3. Inserts and bites are sold separately.  
 4. The max machining range means when installed included spacer.  
 Without spacer, the max machining range is φ42mm.

ORDERING EXAMPLE					
①	②	③	④	⑤	⑥
ST32	-	FIC	25	N	-130-S
① Shank Size					
② Holder's Name					
③ Min. φD					
④ New Type					
⑤ G.L. Length					
⑥ Set					

# FIRSTCUT [Small-hole Boring Tool]

## ST<sup>Ⓧ</sup>-FICHEAD<sup>Ⓧ</sup>NJ-<sup>Ⓧ</sup>-L-S



RANGE	MODEL	CODE	SHANK	HEAD	L	L1	φA	φB	φd	φD1	DIAL CALIBRATION	COLLET	N/W (kg)
φ3~23	-FIC1NJ-136-S	620460	-SBS3-100	FCH1NJ	80	136	46	32	10	18	φ0.005	SSCP10-□	1.9
φ3~28	-FIC2NJ-175-S	620462	-SBS5-140	FCH2NJ		175	64		16	28	φ0.010	SSCP16-□	4.4
φ3~23	-FIC1NJ-136-S	620480	-SBS3-100	FCH1NJ	90	136	46	42	10	18	φ0.005	SSCP10-□	2.5
φ3~28	-FIC2NJ-160-S	620482	-SBS5-125	FCH2NJ		160	64		16	28	φ0.010	SSCP16-□	4.6

NOTE : Inserts and bites and collets are sold separately.

ORDERING EXAMPLE					
①	②	③	④	⑤	⑥
ST32	-	FIC	1	NJ	-136-S
① Shank Size					
② Holder's Name					
③ Head No.					
④ New Jig Borer Type					
⑤ G.L. Length					
⑥ Set					

BT series

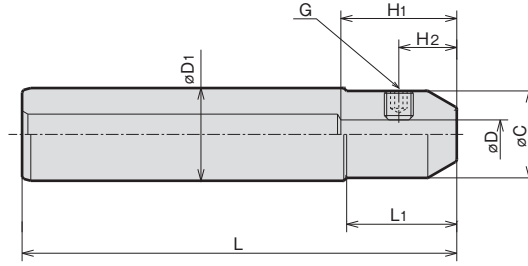
HSK series

ST series

Versatile Tool

Cutting Tool

Accessories



MODEL	CODE	øD1	øD(H6)	øC	L	L1	H1	H2	G	N/W (kg)
ST25	-S06	30502	6	20	120	30	30	13	M6	0.38
	-S08	30504	8					15		0.37
	-S10	30506	10	30			40	M10	0.42	
ST32	-S06	30509	6	20	150	38	30	13	M6	0.72
	-S08	30510	8					15		0.72
	-S10	30512	10	30			M10	0.75		
	-S12	30514	12	32				0.77		
							◇	40	20	

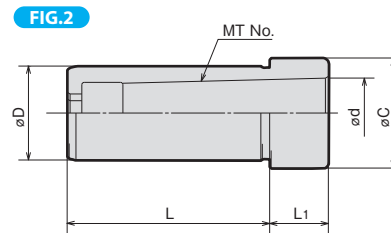
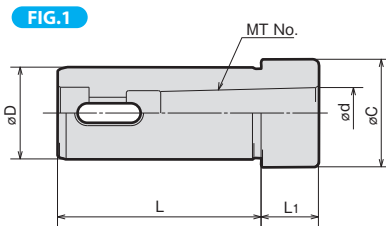
ST series

**ORDERING EXAMPLE**

① **ST32** - ② **S** ③ **06** - ④ **030**

- ① Shank Size
- ② Holder's Name
- ③ Cutter's Shank Dia.
- ④ L1

# MORSE TAPER COLLET



MODEL	CODE	FIG.	øD	øC	L	L1	MT		N/W (kg)
							MT No.	ød	
20-MT1	35522	1	20	23.5	56	20	1	12.065	0.16
-MT2	35524				58	35	2	17.780	0.13
25-MT1	35532		25	31	66	15	1	12.065	0.27
-MT2	35534				73	20	2	17.780	0.24
32-MT1	35552	2	32	37.5	66	15	1	12.065	0.47
-MT2	35554				71	20	2	17.780	0.46
-MT3	35556				3	23.825	0.35		
42-MT1	35582	1	42	47.5	76	20	1	12.065	1.02
-MT2	35584				2	17.780	0.93		
-MT3	35586	2			77	15	3	23.825	0.76
-MT4	35588				85	30	4	31.267	0.75

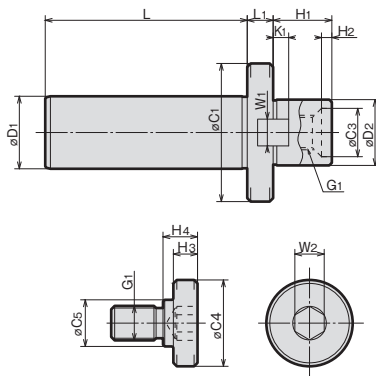
**ORDERING EXAMPLE**

① **20** - ② **MT** ③ **1**

- ① Shank Size øD
- ② Name
- ③ MT No.

# FACE MILL ARBOR (Type A)

ST<sup>Ⓝ</sup>-FMA<sup>Ⓝ</sup>D<sup>Ⓝ</sup>



MODEL	CODE	øD1	øD2(h6)	L	L1	øC1	øC3	H1	H2	KEY		G1	CLAMP BOLT					CLAMP BOLT	N/W (kg)	
										W1	K1		øC4	øC5	H3	H4	W2			
ST32	-FMA25.4	30462	32	112	25.4	15	50	◇	22	◇	9.5	5	M12	33	23	10	12	10	MBA-M12	1.1
	-FMA31.75	30464			31.75	15	60	24	30	6	12.7	7	M16	40	23	10	16	14	-M16	1.3
	-FMA38.1	30466			38.1	18	80	28	34	6	15.9	9	M20	50	27	14	20	17	-M20	1.9
ST42	-FMA25.4	30468	42	117	25.4	15	50	◇	22	◇	9.5	5	M12	33	23	10	12	10	MBA-M12	1.7
	-FMA31.75	30470			31.75	15	60	24	30	6	12.7	7	M16	40	23	10	16	14	-M16	1.9
	-FMA38.1	30472			38.1	18	80	28	34	6	15.9	9	M20	50	27	14	20	17	-M20	2.5
	-FMA50.8	30474			50.8	20	100	38	36	10	19.0	10	M24	65	37	14	24	17	-M24	3.4

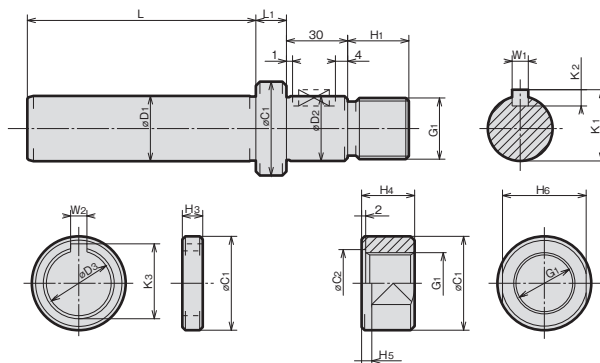
**ORDERING EXAMPLE**

① **ST32** ② **FMA** - ③ **25.4**

① Shank Size øD1  
 ② Name  
 ③ øD2

# SIDE CUTTER ARBOR

ST<sup>Ⓝ</sup>D<sup>Ⓝ</sup>-SCA<sup>Ⓝ</sup>D<sup>Ⓝ</sup>-L<sup>Ⓝ</sup>



MODEL	CODE	øD1	øD2(h6)	L1		øC1	G1 × P	H1	L	W1	K1	K2	øC3	H3	W2	K3	øC2	H4	H5	H6	N/W (kg)																
				STAN-DARD	OPTION																																
ST32	-SCA15.875-015	30422	32	15	30	60	26	M14×1.5	16	112	3.18	17.42	3.18	15.875	3.18	17.7	17	13	3	22	1.0																
	-SCA22.225-015	30426																				22.225	34	M20×1.5	21	3.18	23.82	3.18	22.225	3.18	24.1	23	18	4	30	1.2	
	-SCA25.4-015	30430																				25.4	40	M24×2	25	6.35	27.78	6.35	25.4	5	6.35	28.1	28	21	4	32	1.4
	-SCA31.75-015	30434																				31.75	46	M30×2	30	7.92	34.92	7.92	31.75	10	7.92	35.2	33	26	5	41	1.7
ST42	-SCA25.4-015	30438	42	15	30	60	40	M24×2	25	117	6.35	27.78	6.35	25.4	20	6.35	28.1	28	21	4	32	2.0															
	-SCA31.75-015	30442																					31.75	46	M30×2	30	7.93	34.92	7.92	31.75	7.92	35.2	33	26	5	41	2.3
	-SCA38.1-015	30446																					38.1	55	M36×3	36	9.52	42.06	9.52	38.1	9.52	42.3	41	31	5	46	2.7

**ORDERING EXAMPLE**

① **ST32** - ② **SCA** ③ **25.4** - ④ **015**

① Shank Size øD1  
 ② Name  
 ③ øD2  
 ④ L1

BT series

HSK series

ST series

Versatile Tool

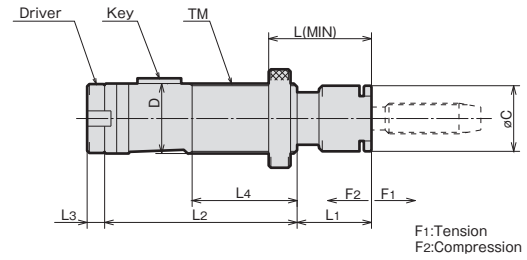
Cutting Tool

Accessories

For automotive shanks and SLB holders.

### FEATURES

- Compact tension-compression tapper.
- Very short since the parts are housed in the shank.
- Tap, collet and driver can be changed quickly.



MODEL	CODE	øD	L MIN.	L1	L2	L3 DR	L3 CL	L4	øC	KEY WIDTH	TM	F1	F2	TAP SIZE	COLLET	DRIVER	N/W (kg)	
AFT01	-19	40002	19	40	30	74	6	18*	38	20	4	14	10	M3-M12 PT <sup>1</sup> / <sub>8</sub>	TC19	CL19 or DR19	0.15	
	-20	40004	20								5						20×2	0.20
	-22	40006	22								5						22×2	0.20
	-26	40010	26	42	32	81	8	23	40	23	5	26×2	16	M4-M14 PT <sup>1</sup> / <sub>8</sub> - PT <sup>1</sup> / <sub>4</sub>	TC25	CL25 or DR25	0.35	
	-32	40012	32	44	34	88	8	33	48	30	6	18	10	M5-M20 PT <sup>1</sup> / <sub>8</sub> - PT <sup>3</sup> / <sub>8</sub>	TC32	CL32 or DR32	0.44	
	-35	40014	35								6						35×2	0.78
	-48	40016	48	58	45	105	8	43	60	45	8	48×2	20	15	M16-M33 PT <sup>1</sup> / <sub>4</sub> - PT1	TC48	CL48 or DR48	1.6

NOTE: 1. \* M10, M12 : 18→26  
2. Both clutch driver and positive driver are available.

### ORDERING EXAMPLE

① **AFT01** - ② **19**

- ① Holder's Name  
② øD

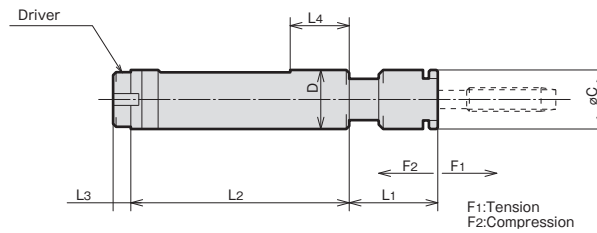
### ACCESSORIES

**P.154** BOTH CLUTCH DRIVER AND POSITIVE DRIVER

# SIDE LOCK TAPPER (Set Screw Drive)

## AFT02-①

For endmill holders.



MODEL	CODE	øD	L1	L2	L3 DR	L3 CL	L4	øC	F1	F2	TAP SIZE	COLLET	DRIVER	N/W (kg)
AFT02	-20	30342	20	30	74	6	18*	20	14	10	M3-M12, PT <sup>1</sup> / <sub>8</sub>	TC19	CL19, DR19	0.18
	-25	30344	25	32	81	8	23	23	16		M4-M14, PT <sup>1</sup> / <sub>8</sub> - <sup>1</sup> / <sub>4</sub>	TC25	CL25, DR25	0.32
	-32	30346	32	34	88	8	33	25	30		18	M5-M20, PT <sup>1</sup> / <sub>8</sub> - <sup>3</sup> / <sub>8</sub>	TC32	CL32, DR32

NOTE: 1. \* M10, M12 : 18→26  
2. Both clutch driver and positive driver are available.

### ORDERING EXAMPLE

① **AFT02** - ② **20**

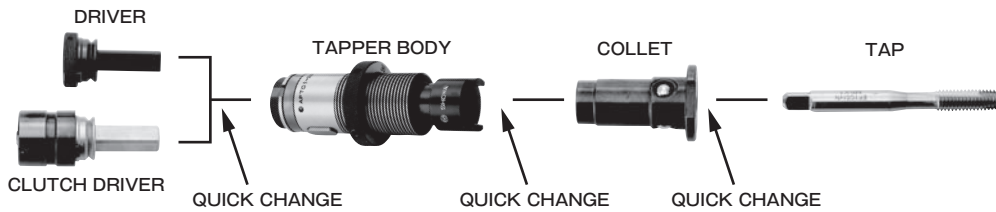
- ① Holder's Name  
② øD

### ACCESSORIES

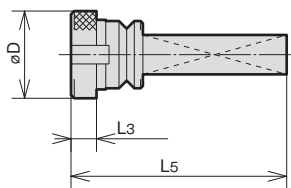
**P.154** BOTH CLUTCH DRIVER AND POSITIVE DRIVER



## COMPONENTS OF TAPPER



## DRIVER (Positive) DR<sup>Ⓧ</sup>



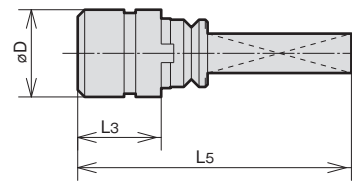
MODEL	CODE	φD	L3	L5	TAPPER
DR	19	19	6	47	19, 20, 22
	25	25	6	47	25, 26, 28
	32	32	8	55	32, 35, 36
	48	48	8	65	48

### ORDERING EXAMPLE

① **DR** - ② **19**

- ① Name
- ② Tapper Size

## DRIVER (With Torque Clutch) CL<sup>Ⓧ</sup>- (TAP SIZE)



MODEL	CODE	φD	L3	L5	TAPPER
CL	19	19	18*	59**	19, 20, 22
	25	25	23	64	25, 26, 28
	32	32	33	80	32, 35, 36
	48	48	43	100	48

NOTE: 1. \* M10, M12 : 18→26  
2. \* M10, M12 : 59→67

### ORDERING EXAMPLE

① **CL** ② **19** - ③ **M4**

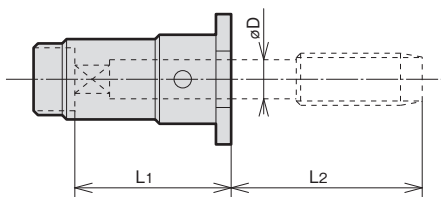
- ① Name
- ② Tapper Size
- ③ Tap Size

## TAP COLLET TC<sup>Ⓧ</sup>- (TAP SIZE)

### FEATURES

#### Quick change tap collet.

Push in the tap collet to unload the tap. Then, tapcollet can be removed by hand.



### ORDERING EXAMPLE

① **TC** ② **19** - ③ **M4**

- ① Name
- ② Tapper Size
- ③ Tap Size

### HAND TAP (JIS)

CODE	TAP	φD	TC19		TC25		TC32		TC48																									
			L1	L2	L1	L2	L1	L2	L1	L2																								
TC19	M3	4	25	21	25	27	35	35	45	50																								
	M3.5			23																														
	M4			27																														
	TC25	M4.5		5							30	25	30	35	35	45	50																	
		M5									30	25	25																					
	TC32	M6		6							30	32	35	35	38	45	50																	
		M8										40																						
		TC48		M9								7						42	37	34	38	45	50											
				M10														45	40	37														
		TC48		M12								8.5						30	52	35	35	38	45	50										
M14			47																															
TC25			M16	12.5	30	53	35	35	38	45		50																						
			M18			57																												
TC32			M20	15		30													35						35	38	45	50						
			M22																										62					
	TC48		M24	19							30		35	35	38	45	50																	
			M27																										67					
	TC48		M30	23																									30	35	35	38	45	50
			M33																															
		TC48	M33	25														30		35	35	38	45	50										
			M33																															

### PIPE TAP (JIS)

CODE	TAP	φD	TC19		TC25		TC32		TC48					
			L1	L2	L1	L2	L1	L2	L1	L2				
TC19	PT <sup>1</sup> / <sub>8</sub>	8	30	25	32	30	32	33	40	40				
	PT <sup>1</sup> / <sub>4</sub>										23	23	30	30
	PT <sup>3</sup> / <sub>8</sub>										30	30	33	33
	PT <sup>1</sup> / <sub>2</sub>										40	40	45	45
	PT <sup>3</sup> / <sub>4</sub>										45	45	50	50
	PT1										50	50	55	55